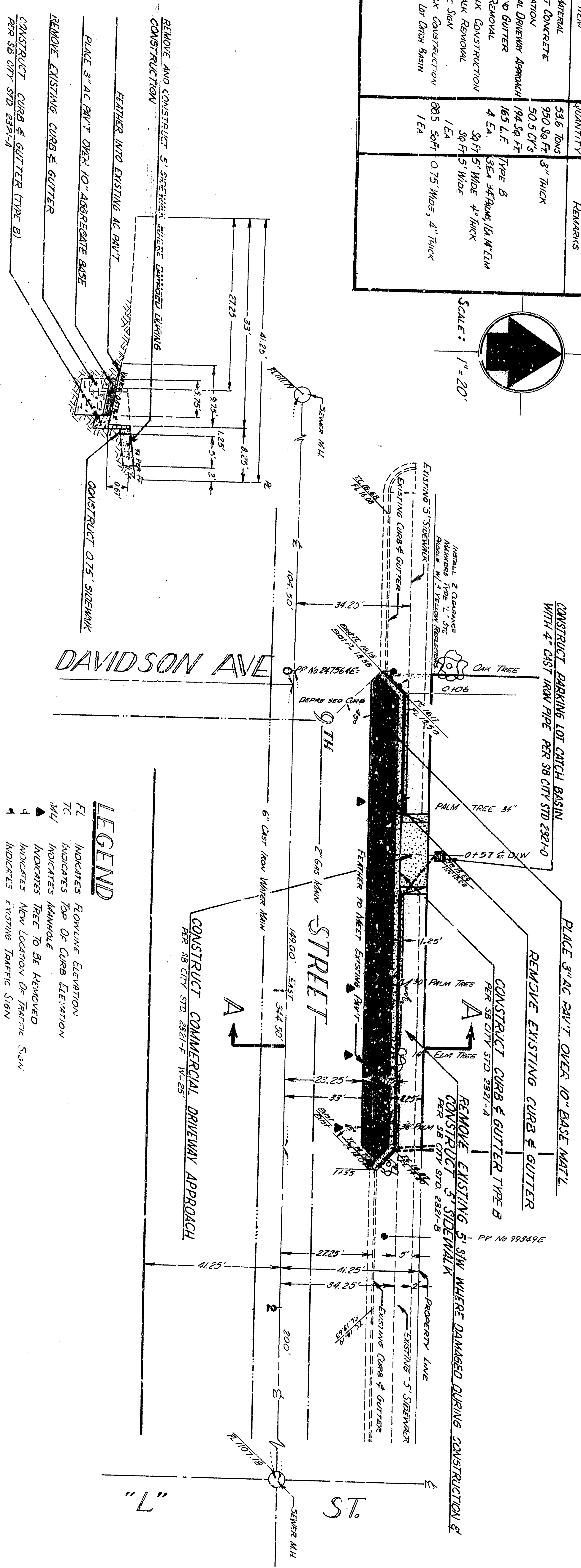
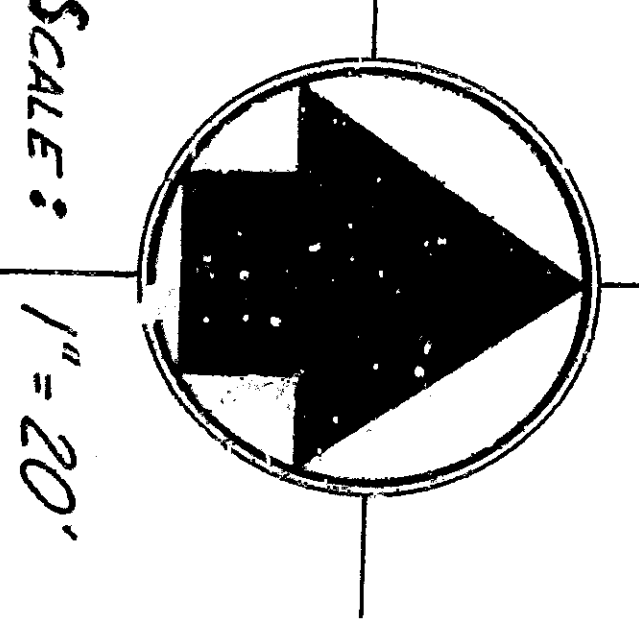


ESTIMATE OF QUANTITIES

ITEM NO.	ITEM	QUANTITY	REMARKS
1.	BASE MATERIAL	33.6 TONS	
2.	ASPHALT CONCRETE	900 SQ. FT.	3" THICK
3.	EXCAVATION	50.5 CU. YD.	
4.	COMMERCIAL DRIVEWAY APPROACH	184.50 SQ. FT.	
5.	CURB AND GUTTER	451 L.F.	TYPE B
6.	RACE ROUNDOFF	36.75 L.F.	3/4" RADIUS 18" WIDE
7.	ASPHALT CONSTRUCTION	36.75 SQ. YD.	3" THICK
8.	ASPHALT CONSTRUCTION	1.5 SQ. YD.	3" THICK
9.	ASPHALT CONSTRUCTION	885 SQ. FT.	0.75" THICK, 4" THICK
10.	ASPHALT CONSTRUCTION	1.5 SQ. YD.	3" THICK
11.	PAVING FOR DRIVE BASIN	1 EA.	



LEGEND

- TL INDICATES FINISHED ELEVATION
- TC INDICATES TOP OF CURB ELEVATION
- HA INDICATES HORIZONTAL
- ▲ INDICATES POINT TO BE REMOVED
- ◆ INDICATES NEW LOCATION OF RAISED SIGN
- ◆ INDICATES EXISTING TRAFFIC SIGN

NOTE: TREE WELLS TO BE CONSTRUCTED AS DIRECTED BY THE ENGINEER.

GENERAL NOTES

1. All Work On These Plans Shall Be Done In Davidson, TN With The Existing Conditions Of Specifications No. 271, Revised October 1964, Of The City Of San Bernardino, And Standard Drawings No. 221, As Filed In The Office Of The City Engineer.
2. The Existence And Location Of Any Underground Utility Pipes Or Structures Shown On These Plans Are Obtained By A Search Of Available Records To The Best Of Our Knowledge There Are No Existing Utilities Except As Shown.
3. The Contractor Is Required To Take Due Precaution - As Indicated - To Protect The Utility Lines And Any Other Lines Not Of Record Or Not Shown On These Plans.
4. Basis Of Datum: 100 East Rim Survey Main Hole 9th And L Streets Elevation = 1112.69
5. Basis Of Bearings: Centerline 9th Street Per Town No. 1734, Taken As East.
6. Approximate Coat Prior To Paving.
7. All Trees And Miscellaneous Items Lying Within The Limits Of Construction To Be Removed By Contractor.
8. Water Meters, Etc. To Be Raised To Grade By Others.

MAXWELL & KING
ENGINEERS & SURVEYORS
422 WEST SIXTH STREET
SAN BERNARDINO, CALIFORNIA

REGISTERED ENGINEER
CLAUDE E. KING - No. 14 386

**DEPARTMENT OF ENGINEERING
CITY OF SAN BERNARDINO**

STREET PLANS 9TH AND L STREETS
AREA
MAP PLANS 9TH ST - NORTH SIDE BETWEEN DAVIDSON
AVE. & 7TH ST. CURB, GUTTERS, SIDEWALK & PAVING

REVISIONS	DATE	BY	REASON

SUBMITTED BY: [Signature] REF. PLAN NO.
APPROVED: [Signature] DWN. No. 4-20705 3691
CITY ENGINEER RICE NO. 18853

TYPICAL X-SECTION A-A